

# Manual of EA

- 1. EA Name : **GAP\_Hunter**
- 2. Main Function : **Hunter Gap between Brokers**
- 3. Provided by : <http://ea.maxpro.vn>

## INDEX

I.	Introduction.....	2
II.	How to install parameters for robot.....	2
III.	Guide to set parameters for robot. ....	2
IV.	Explanation parameters on the screen .....	4
V.	Risk Disclosure.....	6

## I. Introduction

### 1. Major Features:

- Automatically updates price in some brokers in one chart.
- Compares the prices between brokers and shows the time when gap of these prices appear.
- Automatically opens trades (Buy, Sell) whenever gap of prices happens.
- Closes trades when prices come back the same.
- No limitation of price reference brokers.

### 2. Scope of Works

- Any timeframe (M1, M5, M30, H1, H4...), any symbols (currencies, gold, silver, oil...), any brokers.
- Trades at the same time in some brokers...

## II. How to install parameters for robot

1. Copy robot to the folder Expert in program Folder MetaTrader4

Note: Robot file ends with **.ex4**.

## III. Guide to set parameters for robot.

The below window shows all parameters of robot.

The screenshot shows a window titled 'Common' and 'Inputs'. It contains a table with two columns: 'Variable' and 'Value'. The table lists several parameters, some with icons (ab, green flag, 1/2) and some with default values. To the right of the table are 'Load' and 'Save' buttons. At the bottom of the window are 'OK', 'Cancel', and 'Reset' buttons.

Variable	Value
ab Signal_Control	-----
ab Signal_FROM_Accounts	
ab Signal_TO_Accounts	
ab Adjust_Symbol	
ab Trade_Control	-----
TradeAllow	false
1/2 GAP_Point	50.0
1/2 Lot_Size	0.01

1. Robot works in following cases

- o There are at least two independent MT4 brokers, one sending, and another receiving signals.

- No limit of sending and receiving signals brokers. One broker can receive signal from many brokers and vice versa.
- Only when being attached to the same symbols chart in brokers, robot receives/sends the exact signals.
- All pair symbols with suffix (post) are automatically converted to standard symbols with 6 characters. For example, EURUSD.rma -> EURUSD
- Symbol codes between brokers are completely different, such as GOLD and XAUUSD, Adjust\_Symbol should be used. (See below instructions)

## 2. Set the parameter **Signal\_FROM\_Accounts**

- Uses:
  - Inputs a list of signal sending accounts.
  - Only when signals Receiving account is attached to robot, Should this parameter be set.
  - **Otherwise, set blank.**
- Unit of this parameter is a list of accounts. They must be separated by a comma (.). For example: 876493,56243,6373
- Robot automatically updates price from the listed accounts and shows them in charts attached to robot.
- Note:
  - The robot will stop when there is no received signal from at least one account.
  - All listed accounts must be logged in corresponding MT4 and work at the same time.
  - No blank (space) is allowed.

## 3. Set the parameter **Signal\_TO\_Accounts**

- Uses:
  - This option is used to input a list of accounts receiving price information.
  - Only when signals Sending account is attached to robot, Should this parameter be set.
  - **Otherwise, set blank.**
- Unit of this parameter is a list of accounts. They must be separated by a comma (.). For example: 34527,84523,95843
- Robot automatically sends price information to listed accounts.
- Notes:
  - In case, there is no sent signal from at least one account, the robot will stop.
  - All listed accounts must be logged in corresponding MT4 and work at the same time.
  - No blank (space) is allowed.

## 4. Set the parameter **Adjust\_Symbol**

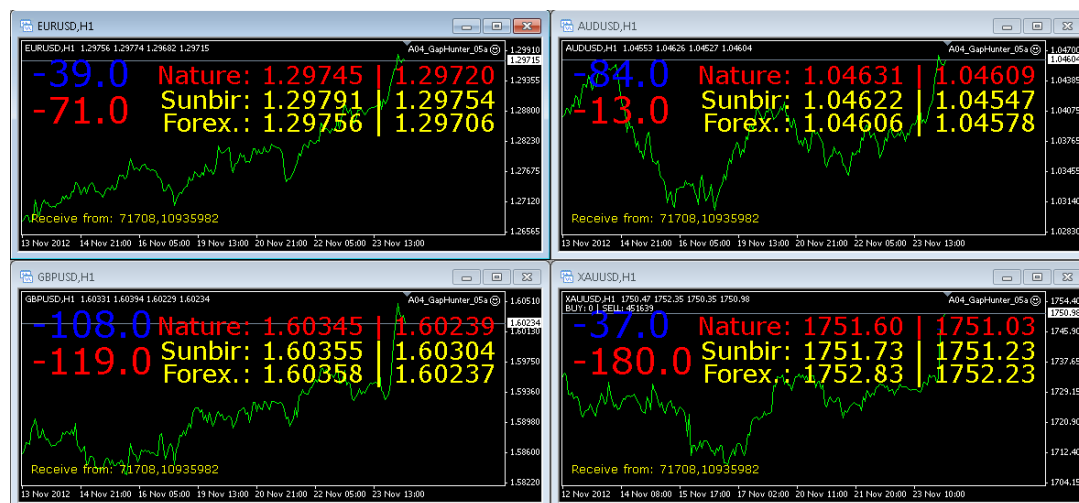
- Uses: This advanced option only should be used in case pair symbols which need comparing price are completely different.

- If this parameter is blank, robot will automatically find pair symbols between Receiving/Sending brokers to transfer exact information. If trades are only on basic symbols, **Adjust\_Symbol** should be cleared (as default).
  - Notes:
    - Robot automatically recognize prefix and suffix with pair symbols. For example, EURUSD.rma = rma.EURUSD = EURUSD.
    - Typical symbols such as GOLD, XAUUSD or GOLDUSD are auto recognized.
    - Only uses this parameter in case robot shows “*Use Adjust\_Symbol to convert Symbol*”.
  - The way to use if necessary
    - Enters at once any code to Adjust\_Symbol parameter in robots of both signal sending and receiving account.
    - Notes: It is important that this code is the same in two robots. Meanwhile, Robot will automatically set up connection.
5. Set the parameter **TradeAllow**
- Uses: This option allows auto trades for robot.
  - Value: True and False.
  - Default value: false (No auto trades).
  - Notes: If traders want auto trades whenever gap of price between brokers happens, the value must be True.
6. Set the parameter **GAP\_Point**
- Uses: **GAP\_Point** means the minimum gap of price at which robot automatically open orders.
  - Value: Point
  - Default value: 50 (usual for basic symbols)
  - Notes: This option is available if TradeAllow is true (Robot opens auto trades in case of gap of price).
7. Set the parameter **Lot\_Size**
- Uses: **Lot\_Size** means Lot for each auto trade.
  - Default value: 0.01
  - Notes:
    - This option is available if TradeAllow is true (Robot opens auto trades in case of gap of price)...
    - **Lot\_Size** must be not lower than the specified minimum lot size of the broker.
    - Otherwise, the robot will stop.

#### IV. Explanation parameters on the screen

1. General instructions
- Robot could be attached in many charts with corresponding symbols in one MT4.
  - No limit of reference brokers. Traders should use maximum 3-5 reference brokers.

- Reference brokers should have standard price. We would like to recommend choosing forex.com, Sunbird and FXPro.
- Robot counts gap of price regardless of impact of spread on reference brokers. This price information, therefore, is pure.
- This below image illustrates price comparison of 4 symbols between some brokers.



## 2. Explanations of parameters on Receiving signals screen

- Gap of Bids:
  - Value = Bid in reference broker – Ask in current broker
  - This is the minimum gap, compared to other brokers.
  - Value > 0 means appearing gap of price;
  - When gap of price is much enough, trader has opportunity to open a BUY trade. We would like to recommend
    - 50 point for basic symbols.
    - 100 point for gold.
- Gap of Asks:
  - Value = Bid in current broker – Ask in reference broker.
  - This is the minimum gap, compared to other brokers.
  - Value > 0 means appearing gap of price;
  - When gap of price is much enough, trader has opportunity to open a SELL trade. We would like to recommend
    - 50 point for basic symbols.
    - 100 point for gold.
- Bid and Ask
  - In price column, the former is Bid, the latter is Ask.
  - Bid and ask in robot attached broker are shown at the top red line.

- The below price line is in reference brokers.
- Information sending accounts
  - Means a list of accounts receives reference price information.

## **V. Risk Disclosure**

1. Maxpro does not and cannot guarantee any efficiency of robot (EA) on the initial capital of the traders or its value at any time or any money on the account that use our robot (EA).
2. The Client should unreservedly acknowledge and accept that he runs a great risk of incurring losses and damages as a result of using this robot (EA).
3. The Client should not engage in any utilization directly or indirectly of Robot (EA) unless he knows and understands the features risks involved for using this Robot (EA).
4. We would like to recommend that Traders:
  - Must be fully aware of all functions of Robot (EA) and features and principles of each option when setting value of all Robot parameters.
  - Fluently practice EA on the demo accounts before acting on the real accounts.
  - It is very risky to co-ordinate this Robots (EAs) with others on an account at the same time.

**WISH YOU SUCCESS!**